

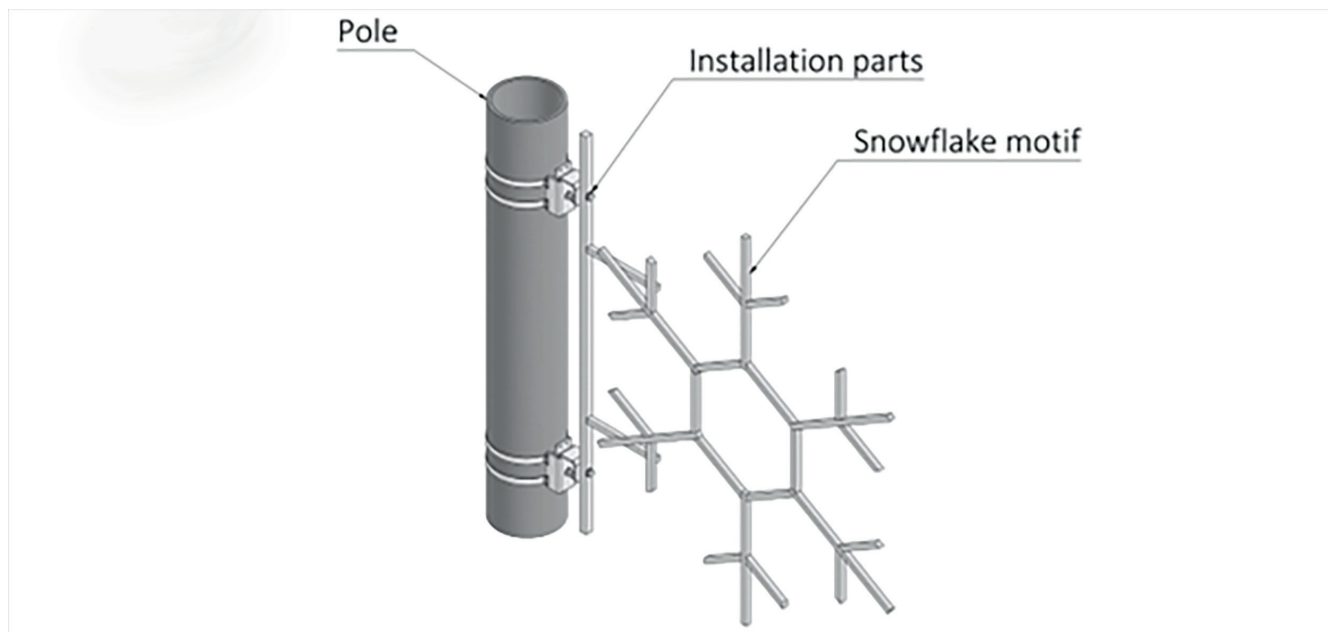
Installation Manual

POLE MOTIF



ADAMLIGHTS®

INSPIRED BY NORTHERN LIGHTS



IMPORTANT NOTICE

Before handling or installing the product make sure to carefully read the whole manual!

INSTALLATION TOOLS

Tools needed for installation are fixation tool (58009.50) and hammer. Tools are shown below.

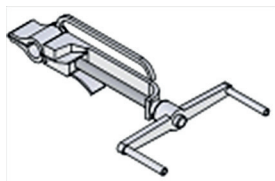


Figure 1 - Step 1.1

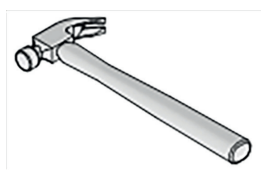


Figure 2 - Step 1.2

PRODUCT PARTS

There are 2 sets of pole mounting parts (58001.50) for motifs installed. For one pole mount (58001.50) 2 pcs of metal banding tape (58005.50) and 2 pcs of metal buckle (58006.50) is used. Metal banding tape

is cut into length during installation process. Product parts required for installation are shown below:



Figure 3 - Snowflake motif

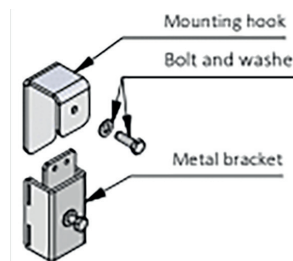


Figure 4 -
Mounting parts 58001.50



Figure 5 -
Metal banding tape 58005.50

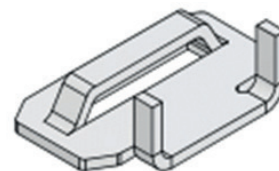


Figure 6 -
Metal buckle for banding
tape 58006.50

Installation Manual

POLE MOTIF



ADAMLIGHTS®
INSPIRED BY NORTHERN LIGHTS

STEP 1

Install the mounting hook from the mounting parts (58001.50) to the snowflake motif using a bolt and a washer. The bolt and the washer are included with the mounting parts (58001.50). (Figure 7)

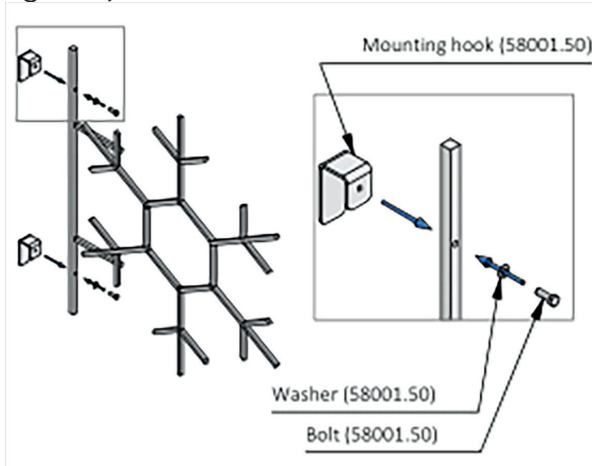


Figure 7 - Step 1

STEP 2

For wrapping application the banding needed is approximately 3,5 times the pole diameter and additional 150 to 200 mm.

Take an appropriate length of metal banding (58005.50) and insert the end of the banding into the buckle (58006.50) through the bridge and past the ears. Leave 50 to 75 mm of banding extending past the buckle. (Figure 8 and Figure 9)

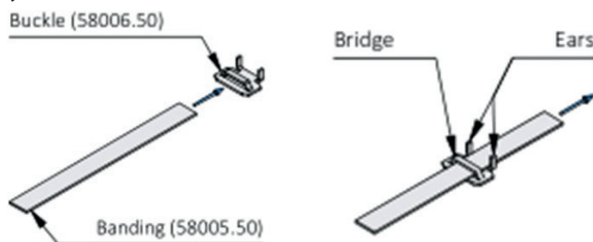


Figure 8 - Step 2.1

Figure 9 - Step 2.2

Bend the extended banding end around and underneath the buckle. (Figure 10) Squeeze the bend to flatten it out. This will

fix the banding to the buckle and prevent the banding pulling out during tensioning. (Figure 11)

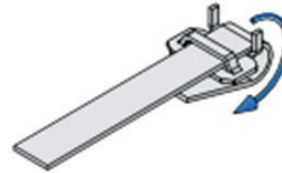


Figure 10 - Step 2.3

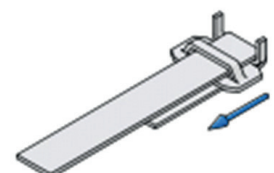


Figure 11 - Step 2.4

STEP 3

Run the prepared bands through the metal bracket (58001.50). (Figure 12 and Figure 13)



Figure 12 - Step 3.1

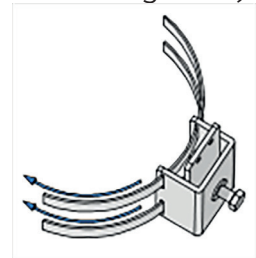


Figure 13 - Step 3.2

STEP 4

Move the top metal bracket (58001.50) to a suitable location on the pole and wrap the first banding strap around the pole. Pull the end of the banding strap through the bridge of the metal buckle (58006.50). (Figure 14)

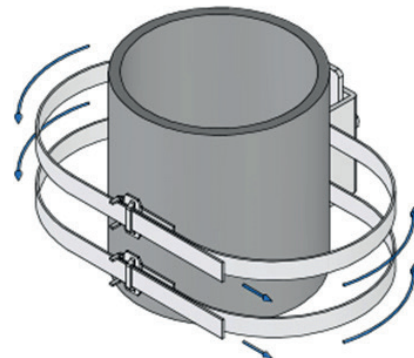


Figure 14 - Step 4

Installation Manual

POLE MOTIF



ADAMLIGHTS®

INSPIRED BY NORTHERN LIGHTS

STEP 5

Bend remaining banding strap 90° so that it is perpendicular to the buckle. (Figure 5)

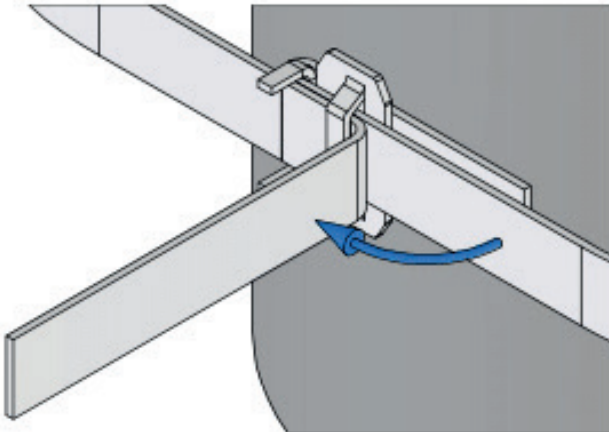


Figure 15 - Step 5

Repeat the steps 4 and 5 until other metal brackets (58006.5) are loosely affixed to the pole with both banding straps.

STEP 6

Open the grip latch and bring the fixation tool in line with the excess strapping as shown. Fit the banding strap into the slot in the tool nose and gripper block. (Figure 16)

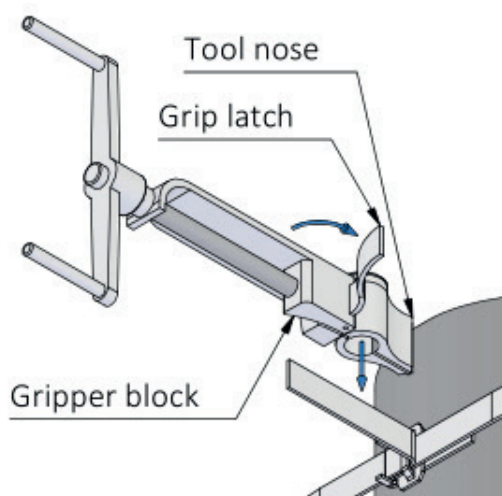


Figure 16 - Step 6

STEP 7

While pressing down on the grip latch with your thumb, turn the handle clockwise to create tension. (Figure 17)

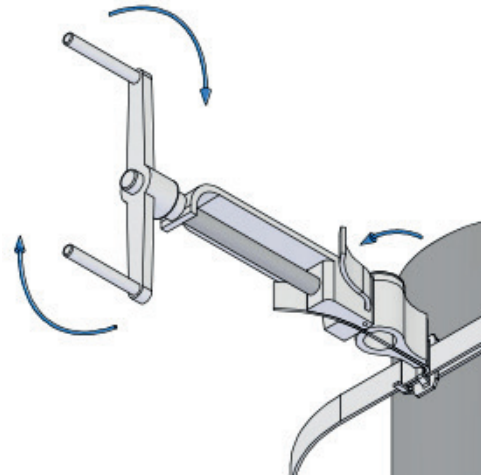


Figure 17 - Step 7

Before you fully tighten the banding straps, make sure the metal brackets are in the correct position.

STEP 8

Continue turning the handle in a clockwise direction. When banding stops moving through the buckle it has achieved maximum tension and you must stop turning the handle. (Figure 18)

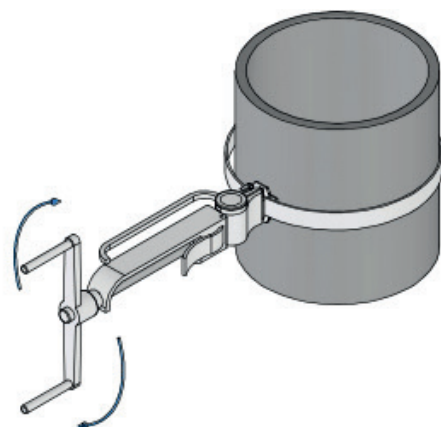


Figure 18 - Step 8

Installation Manual

POLE MOTIF



ADAMLIGHTS®

INSPIRED BY NORTHERN LIGHTS

STEP 9

Roll the entire tool over the buckle 90°. (Figure 19)

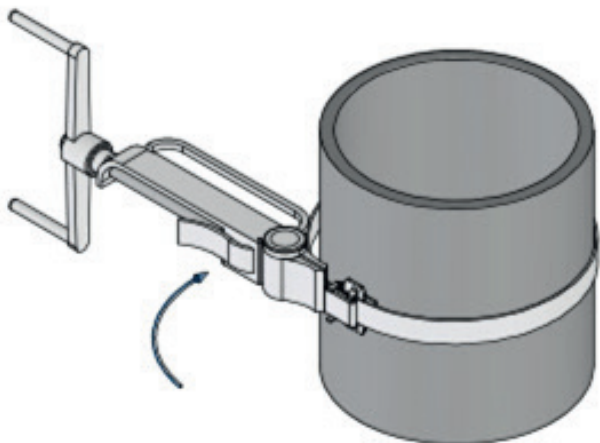


Figure 19 - Step 9

As you roll the tool, you may need to relieve a bit of tension by rotating the handle counterclockwise a bit. Be careful not to relieve too much tension or this will result in a loose clamp.

STEP 10

Pull the cutting handle to cut the banding. Discard the cut-off banding and remove the fixation tool. (Figure 20)

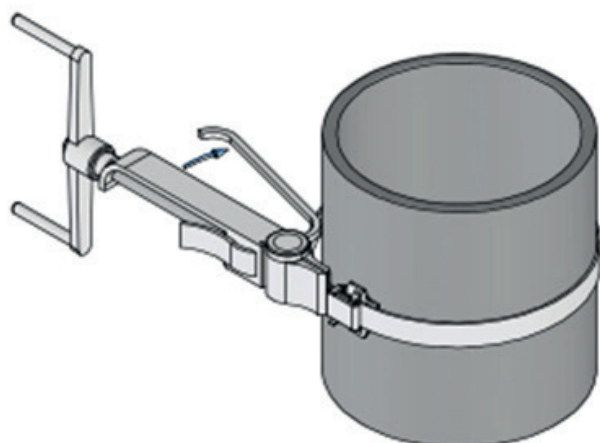


Figure 20 - Step 10

STEP 11

Using the hammer, press remaining branding stub down over the buckle, making sure it falls between the buckle ears. Then hammer the ears down, locking the banding strap in place. (Figure 21 and Figure 22)

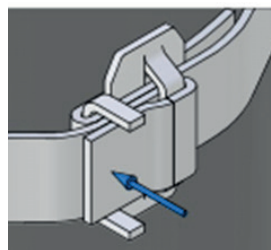


Figure 21 - Step 11.1

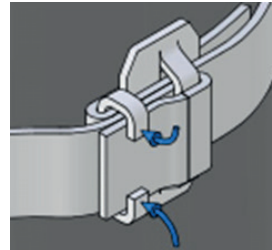


Figure 22 - Step 11.2

STEP 12

Attach the other bracket using the same methods, making sure that it is placed in the correct position. (Figure 23)



Figure 23 - Step 12

Installation Manual

POLE MOTIF



ADAMLIGHTS®

INSPIRED BY NORTHERN LIGHTS

STEP 13

Align motif with the metal brackets (58001.50) and drop the mounting hooks into the brackets. (Figure 24)

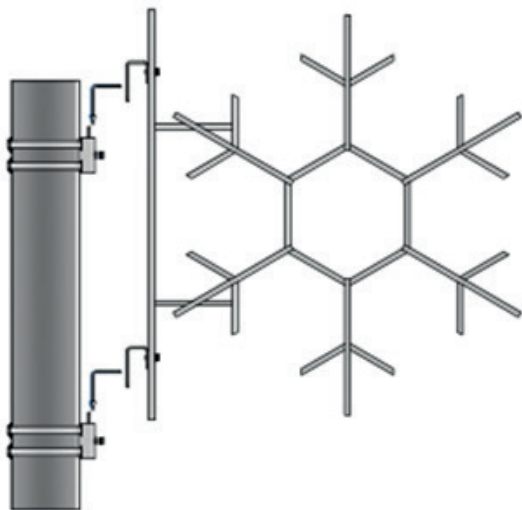


Figure 24 - Step 13.1

Tighten the fixture bolt to secure the snowflake motif. (Figure 25)

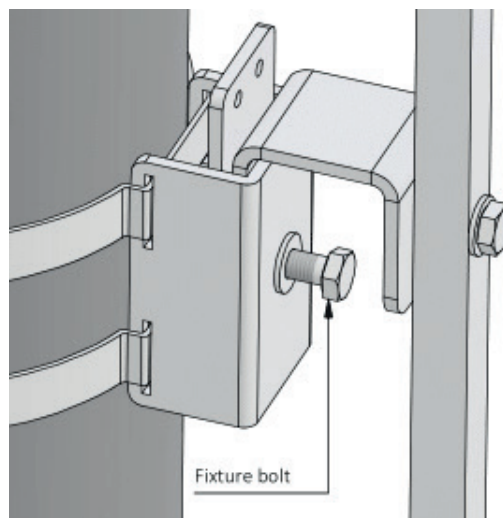


Figure 25 - Step 13.2

After tightening both fixture bolts make sure the motif is correctly installed. Make the electrical connections according to the requirements.

NB! Motifs higher than 3m need 3pcs of pole mount / Metal bracket 58001.50

Installation Manual

POLE MOTIF



ADAMLIGHTS®

INSPIRED BY NORTHERN LIGHTS

GENERAL INFORMATION

This instructions manual (Original instructions) gives an overview of the POLE MOTIF. The manual includes information about the manufacturer, intended use, installation, handling and maintenance of the product.

To get familiar with the product, we insist that you read our instructions very carefully, even if you have worked with a similar product before. These instructions contain information that is essential to ensure safety and efficiency when working with the product.

When receiving the product, make sure that it is not damaged during shipping or transportation. If you notice any damage or lack of parts, please contact the manufacturer immediately.

Any questions regarding the product or its working principle should be directed to the manufacturer. Reading and understanding the content of this manual is mandatory to anyone performing maintenance, installing or handling the product.

When handling, maintaining and installing the product and its various parts, all applicable national laws, regulations, and the contents of this manual must be taken into account to ensure the safety and reliability of the equipment.

During the handling and maintenance of the product, personal protective equipment must be used. Use of at least work gloves, safety boots and safety helmet is required.

Additional protective equipment must be used if the need arises.

When working with tools or machines producing large amount of noise, appropriate noise protection equipment must be used.

When using a ladder or a lift to install the product, the personell must have necessary training and qualifications to use the work equipment.

During installation the safety of the personell and bystandards must be ensured.

Before making any electrical connections make sure that installation process has been done correctly. Make sure there are not any dents or irregularities to the product, fixtures or electrical wires.

All installation steps must be followed exactly and in the correct order.

During maintenance make sure that visual assessment does not reveal any excessive wear of the components.

All maintenance must be carried out by persons with the appropriate skill and technical competence. Changing the construction of the product, adding or removing parts is only allowed after consulting with the manufacturer.

During utilization all structural and electrical parts must be separated by material and brought to the appropriate reveiving point.

The product must only be used for the operations intended for it. It is strictly forbidden to use the product for non-intended operations or uses.

Following the manual is a requirement to ensure that the factory warranty remains.

Ignoring safety instructions and requirement can result in damage of the users' health and/or bodily injury.

Manufacturer
ADAMLIGHTS AS
Järvevana tee 9, 11314 Tallinn, Estonia
sales@adam.ee
+372 6501830
www.adam.ee